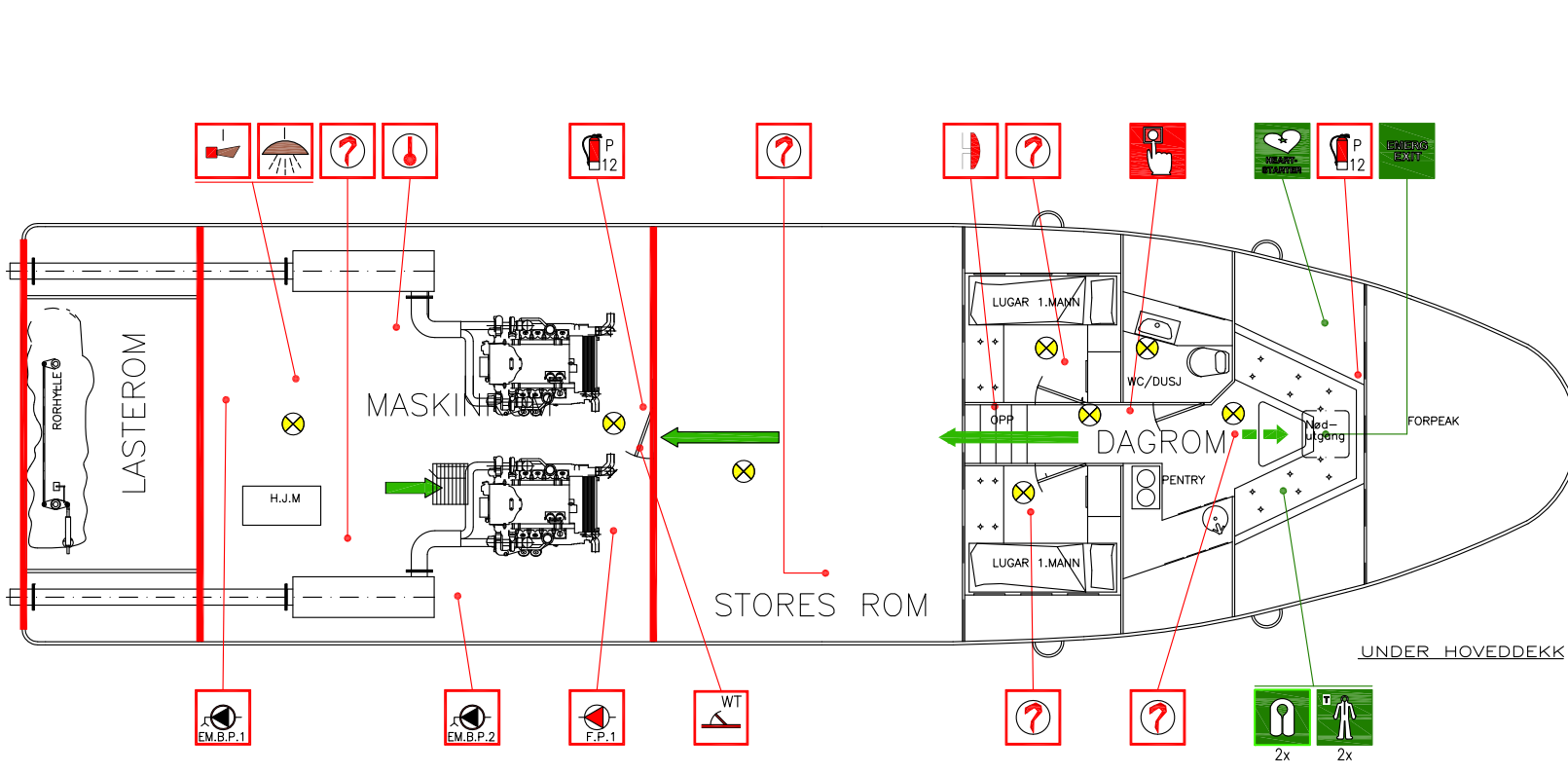
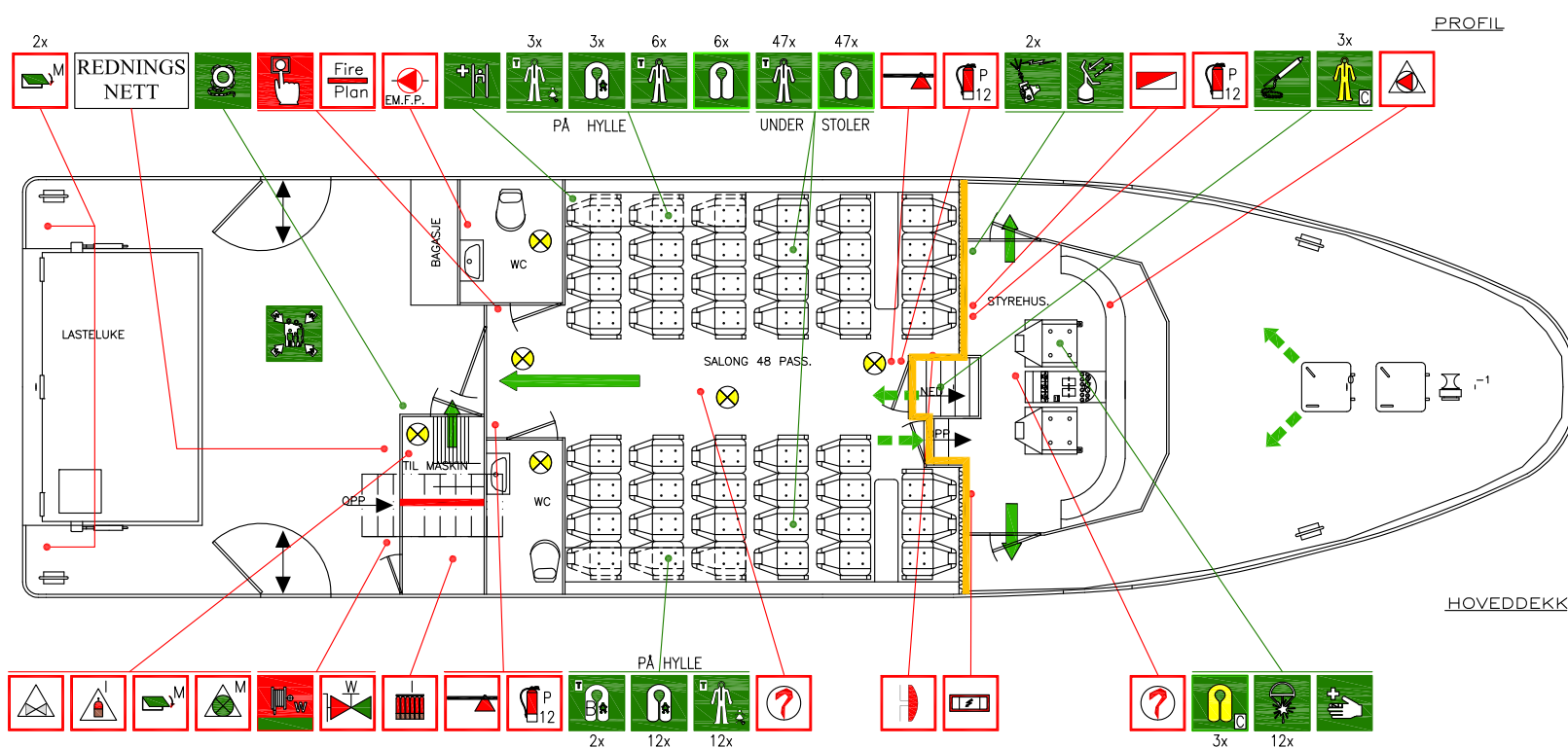
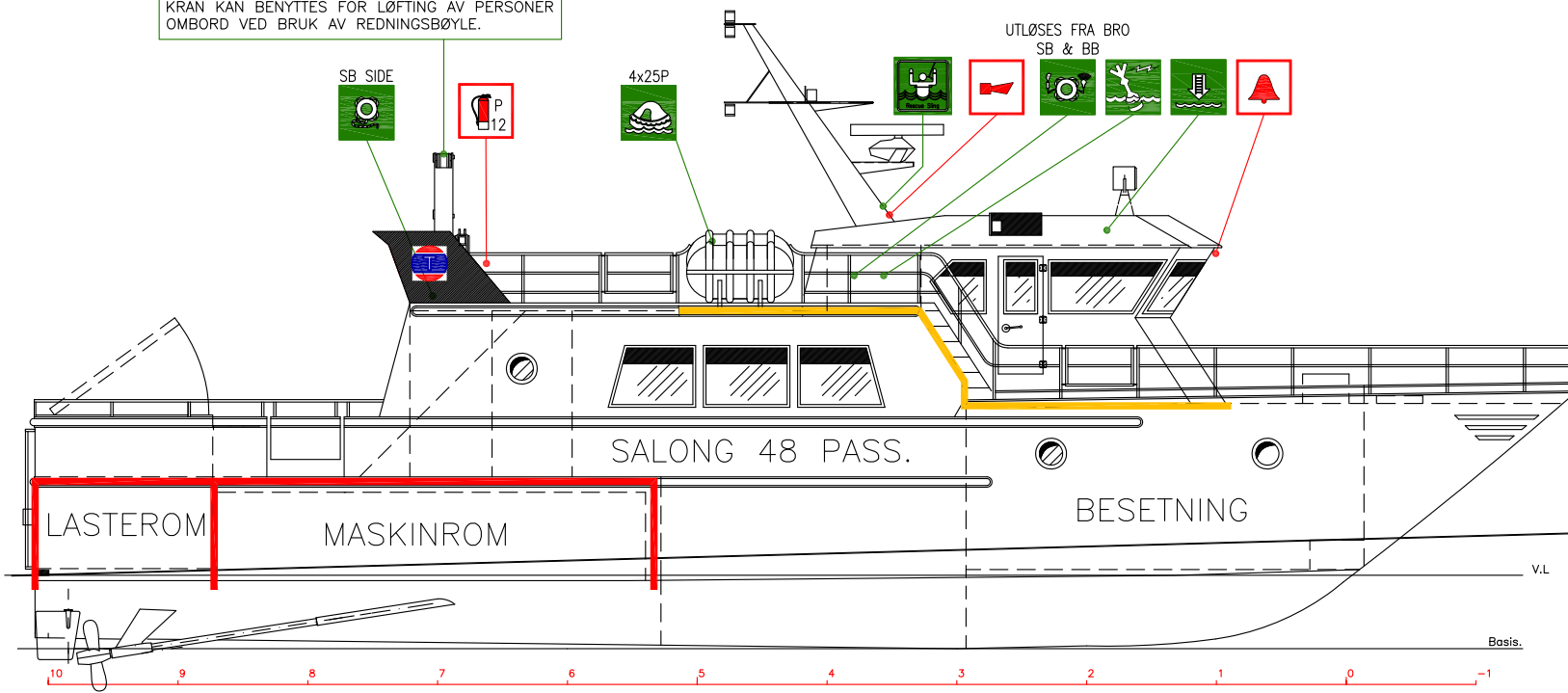


M/S "MELØYTIND" - LIPV BRANN- OG SIKKERHETSPLAN / FIRE CONTROL AND SAFETY PLAN

CRANE CAN BE USED FOR LIFTING OF PEOPLE ONBOARD WHEN RESCUE SLING IS USED.
KRAN KAN BENYTTES FOR LØFTING AV PERSONER OMBORD VED BRUK AV REDNINGSBØYLE.



| LIVREDNINGSUTSTYR LIFESAVING EQUIPMENT | | |
|---|-------------|-------------------------------------|
| SYMBOL | ANTALL QTY. | BESKRIVELSE DESCRIPTION |
| [Icon] | 1 | MUSTER STASJON |
| [Icon] | 4 | LIFE RAFTS 4x25 |
| [Icon] | 2 | REDNINGSFLÅTER 4x25 |
| [Icon] | 2 | LIFEBUOY WITH LIGHT AND SMOKE |
| [Icon] | 2 | LIFEBUOY WITH LINE |
| [Icon] | 2 | LIFEBUOY WITH LINE |
| [Icon] | 55 | LIFE JACKETS ADULTS |
| [Icon] | 55 | REDNINGSVESTER VOKSNE |
| [Icon] | 55 | THERMAL PROTECTIVE SUITS ADULTS |
| [Icon] | 55 | TERMISKE BESKYTTELSERDRAKTER VOKSNE |
| [Icon] | 15 | LIFE JACKETS CHILDREN |
| [Icon] | 15 | REDNINGSVESTER BARN |
| [Icon] | 15 | THERMAL PROTECTIVE SUITS CHILDREN |
| [Icon] | 15 | TERMISKE BESKYTTELSERDRAKTER BARN |
| [Icon] | 2 | THERMAL LIFE JACKETS BABY |
| [Icon] | 2 | TERMISKE REDNINGSVESTER BABY |
| [Icon] | 3 | LIFEJACKETS FOR CREW |
| [Icon] | 3 | YELLOW COLORED MARKED CREW |
| [Icon] | 3 | REDNINGSVESTER FOR MANNSKAP |
| [Icon] | 3 | GUL MERKET MANNSKAP |
| [Icon] | 3 | SURVIVAL SUITS CREW |
| [Icon] | 3 | REDNINGSDRAKTER FOR MANNSKAP |
| [Icon] | 2 | SURVIVAL CRAFT PORTABLE RADIO |
| [Icon] | 2 | HANDHOLDT VHF-RADIO |
| [Icon] | 1 | EMERGENCY RADIO BEACON - EPIRB |
| [Icon] | 1 | FRIFLYT NØDPEILESENDER - EPIRB |
| [Icon] | 1 | RADAR TRANSPONDER |
| [Icon] | 1 | RADAR TRANSPONDER |
| [Icon] | 1 | LINE THROWING APPLIANCE |
| [Icon] | 1 | LINEKASTEAPPARAT |
| [Icon] | 12 | ROCKET PARACHUTE FLARES |
| [Icon] | 12 | FALLSKJERMFLYS |
| [Icon] | 1 | FIRST AID KIT |
| [Icon] | 1 | 1. HJELPS-UTSTYR |
| [Icon] | 1 | HEART STARTER MACHINE |
| [Icon] | 1 | HJERTESTARTER |
| [Icon] | 1 | STRETCHER |
| [Icon] | 1 | BÅRE |
| [Icon] | 1 | EMBARCATION LADDER |
| [Icon] | 1 | INNSKIPINGSLEIDER |
| [Icon] | 1 | RESCUE SLING |
| [Icon] | 1 | REDNINGSBØYLE |
| [Icon] | 1 | EMERGENCY EXIT |
| [Icon] | 1 | NØDUTGANG |
| [Icon] | - | PRIMARY ESCAPE ROUTE |
| [Icon] | - | HOVEDRØMNINGSGVEI |
| [Icon] | - | SECONDARY ESCAPE ROUTE |
| [Icon] | - | ALTERNATIV RØMNINGSGVEI |

| BRANNVERNUTSTYR FIRE-FIGHTING EQUIPMENT | | |
|--|-------------|---|
| SYMBOL | ANTALL QTY. | BESKRIVELSE DESCRIPTION |
| [Icon] | 1 | FIRE CONTROL AND SAFETY PLAN |
| [Icon] | 1 | BRANN OG SIKKERHETSPLAN |
| [Icon] | 2 | MANUALLY OPERATED CALL POINT |
| [Icon] | 2 | MANUELL BRANNMELDER |
| [Icon] | 1 | CONTROL PANEL FOR FIRE DETECTION AND ALARM SYSTEM |
| [Icon] | 1 | KONTROLLPANEL FOR BRANNVARSLING OG ALARMSYSTEM |
| [Icon] | 1 | FIRE HOSE AND NOZZLE FOR WATER |
| [Icon] | 1 | BRANNSLANGE OG DYSE FOR VANN |
| [Icon] | 1 | FIRE HYDRANT WATER |
| [Icon] | 1 | BRANNHYDRANT VANN |
| [Icon] | 6 | FIRE EXTINGUISHER POWDER 12 kg |
| [Icon] | 6 | BRANNSLOKKNINGSAPPARAT PULVER 12 kg |
| [Icon] | 2 | FIRE AXE |
| [Icon] | 2 | BRANNØKS |
| [Icon] | 7 | SMOKE DETECTOR |
| [Icon] | 7 | RØYKDETEKTOR |
| [Icon] | 1 | HEAT DETECTOR |
| [Icon] | 1 | VARMEDETEKTOR |
| [Icon] | 2 | BELL FIRE ALARM |
| [Icon] | 2 | ALARMKLOKKE BRANNALARM |
| [Icon] | 1 | INERGEN HORN |
| [Icon] | 1 | HORN FOR INERGENANLEGG |
| [Icon] | 1 | SPACE PROTECTED BY INERGEN FIREEXTINGUISHING SYSTEM |
| [Icon] | 1 | OMRÅDE BESKYTTET AV INERGEN SLUKKESYSTEM |
| [Icon] | 1 | REMOTE CLOSING FUEL OIL VALVES |
| [Icon] | 1 | FJERNSTENING BRENNOLJEVENTILER |
| [Icon] | 1 | SHUT-OFF VENTILATION MACHINERY SPACES |
| [Icon] | 1 | FJERNSTOPP VENTILASJON MASKINROM |
| [Icon] | 1 | REMOTE RELEASE INERGEN SYSTEM |
| [Icon] | 1 | FJERNUTLØSNING INERGEN SYSTEM |
| [Icon] | 1 | REMOTE START/STOP FIRE PUMP |
| [Icon] | 1 | FJERNSTART/STOPP BRANNPUMPE |
| [Icon] | 3 | CLOSING DEVICE FOR VENTILATION IN MACHINERY SPACES |
| [Icon] | 3 | LUKKEANORDNING FOR VENTILASJON I MASKINROM |
| [Icon] | 1 | EMERGENCY SWITCHBOARD |
| [Icon] | 1 | NØDTAVLE |
| [Icon] | 1 | FIXED FIRE-EXTINGUISHING BATTERY FOR INERGEN |
| [Icon] | 1 | BRANNSLOKKNINGSBATTERI FOR INERGEN |
| [Icon] | 1 | FIRE PUMP (28.8 m3/h at 3 bar) |
| [Icon] | 1 | BRANNPUMPE |
| [Icon] | 1 | EMERGENCY FIRE PUMP (12 m3/h) |
| [Icon] | 1 | NØDBRANNPUMPE |
| [Icon] | 1 | EMERGENCY BILGE PUMP NO. 1 |
| [Icon] | 1 | NØDLENSEPUMPE NR. 1 |
| [Icon] | 1 | EMERGENCY BILGE PUMP NO. 2 |
| [Icon] | 1 | NØDLENSEPUMPE NR. 2 |
| [Icon] | 1 | WT FIRE DOOR CLASS A |
| [Icon] | 1 | VANNTETT BRANNØR KLASSE A |
| [Icon] | - | CLASS A DIVISION |
| [Icon] | - | BRANNSKILLE KLASSE A |
| [Icon] | - | CLASS B DIVISION |
| [Icon] | - | BRANNSKILLE KLASSE B |

HOVEDDIMENSJONER:

| | |
|---------------|---------|
| Lengde L.O.A. | 19.95 m |
| Lengde L.P.P | 17.50 m |
| Bredde | 5.40 m |
| Dybde | 2.22 m |
| BT | 58 tonn |
| Passasjerer: | 48 stk. |
| Mannskap: | 2 stk. |
| Fart: | 18 knop |

DIVERSE MISCELLANEOUS

| SYMBOL | ANTALL QTY. | BESKRIVELSE DESCRIPTION |
|--------|-------------|----------------------------|
| [Icon] | 1 | SHIP'S BELL |
| [Icon] | 1 | SKIPSKLOKKE |
| [Icon] | 14 | EMERGENCY LIGHT |
| [Icon] | 14 | NØDLYS |
| [Icon] | 1 | TYPHOON |
| [Icon] | 1 | TYFON |

NOTE

VESSEL IS EQUIPPED WITH PA-SYSTEM
FARTØYET HAR PA-ANLEGG

| | | |
|-------------------|--|--|
| C | KORRIGERT IHHT GJENNOMGANG OMBORD | 28.01.2015 / RB |
| Rev. | Description: | Date/Sign.: |
| 2015-04-07 | Date: 06.05.2010 Scale: 1:100 | Constr./Drawn: MI Contr.: OTF Approved: RB |
| INMA godkj. rev C | M/S "MELØYTIND" - LIPV BRANN- OG SIKKERHETSPLAN FIRE CONTROL AND SAFETY PLAN | Sheet no: 3105-500-001_C 1 OF 1 |
| Approved: | Reference: | Replacement for: NSK AS - 1539-101-001_2 |