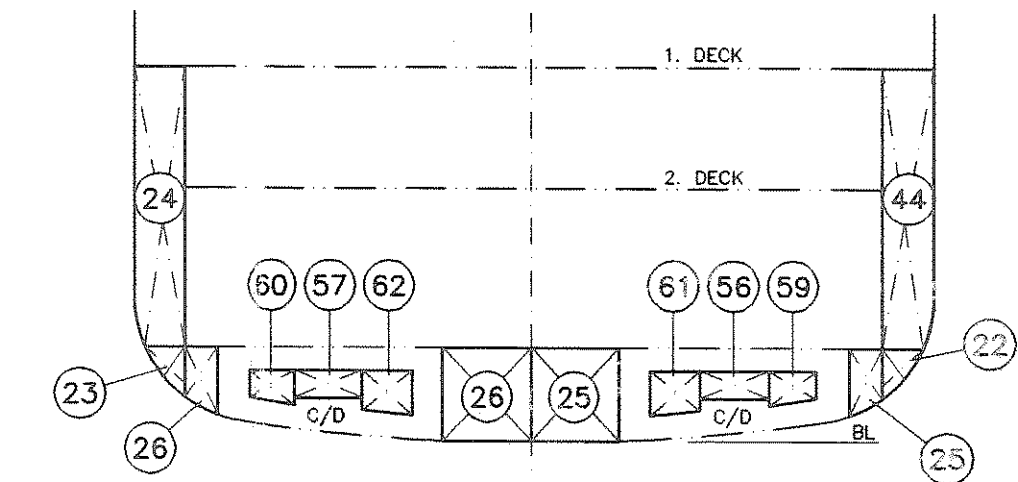
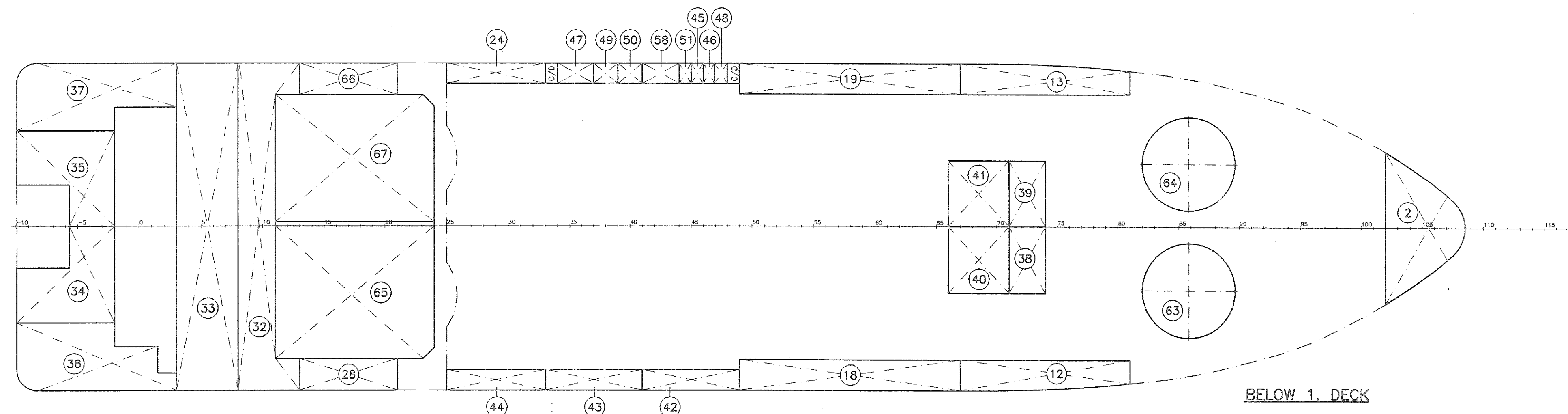


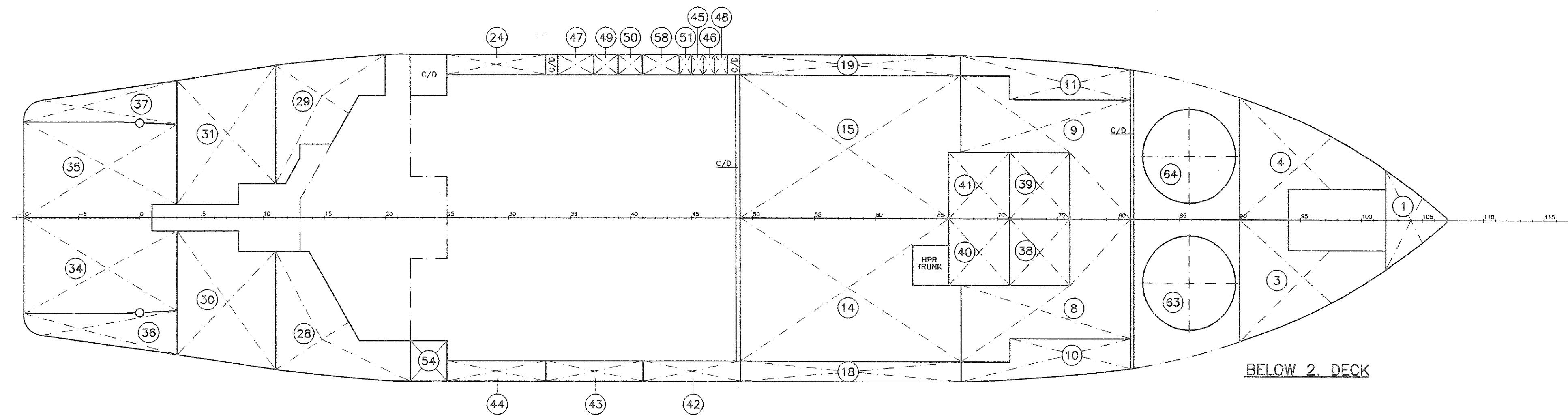
PROFILE



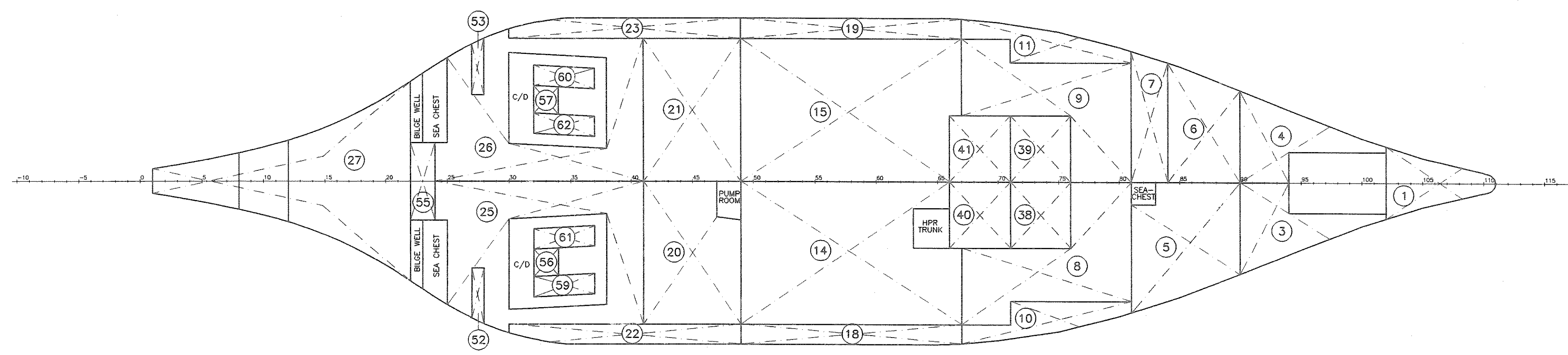
SECTION FR. 32



BELOW 1. DECK



BELOW 2. DECK



POS.	DESCRIPTION	SITUATED	CONTENT	VOLUME	DENSITY	WEIGHTS IN TONNES											
						F.D.	F.W.	W.B.	CEMENT	DRG	L.I.O. H.	SPEC.P.	BRINE	WDG	LCG		
1	FOREPEAK TK. 1.1	FR. 102-	W.B.	44.0	1.023			45.1							8.83	62.98	
2	FOREPEAK TK. 1.2	FR. 102-	F.W.	81.6	1.00			81.6							7.92	63.00	
3	DB TK. 2.1	SB FR. 90-102	F.W.	88.7	1.00			89.7							2.90	56.73	
4	DB TK. 2.1	PS FR. 90-102	F.W.	88.7	1.00			89.7							2.90	56.73	
5	DB TK. 3.1	SB FR. 81-90	W.B.	61.7	1.025			63.2							1.63	51.13	
6	DB TK. 3.1	PS FR. 81-90	W.B.	38.6	1.025			39.6							1.63	52.12	
7	SEWAGE TK.	FR. 81-84		23.2	1.00										1.62	49.48	
8	DB TK. 4.1	SB FR. 67-81	F.D./DRD	153.8	0.87	133.8				153.8				2.36	44.88		
9	DB TK. 4.1	PS FR. 67-81	F.D./DRD	153.8	0.87	133.8				153.8				2.36	44.88		
10	DB WING TK. 4.2	SB FR. 67-81	F.D.	40.1	0.87	34.9								2.96	44.45		
11	DB WING TK. 4.2	PS FR. 67-81	F.D.	40.1	0.87	34.9								2.96	44.45		
12	WING TK. 4.3	SB FR. 67-81	F.D./SPEC.P.	31.4	0.87/0.82	27.3					25.7			6.03	44.13		
13	WING TK. 4.3	PS FR. 67-81	F.D./SPEC.P.	31.4	0.87/0.82	27.3					25.7			6.03	44.13		
14	DB TK. 5.1	SB FR. 49-67	F.D./DRD	321	0.87	279.3								2.31	34.67		
15	DB TK. 5.1	PS FR. 49-67	F.D./DRD	337	0.87	293.2								2.31	34.67		
16																	
17																	
18	WING TK. 5.3	SB FR. 49-67	SPEC.P.	84.8	0.82						69.5			6.00	34.80		
19	WING TK. 5.3	PS FR. 49-67	SPEC.P.	84.8	0.82						69.5			6.00	34.80		
20	DB TK. 6.1	SB FR. 41-49	SPEC.P.	97.9	2.0						195.8			1.57	26.95		
21	DB TK. 6.1	PS FR. 41-49	SPEC.P.	105.2	2.0						210.4			1.57	27.04		
22	DB WING TK. 6.2	SB FR. 30-49	W.B.	22.2	1.025			22.8						1.83	25.97		
23	DB WING TK. 6.2	PS FR. 30-49	W.B.	22.2	1.025			22.8						1.83	25.97		
24	FOAM TK. 1	FR. 26-33	FOAM	20.1	1.08												
25	DB TK. 7.1	SB FR. 22-41	SPEC.P.	90.9	1.305						118.6			1.27	20.59		
26	DB TK. 7.1	PS FR. 22-41	SPEC.P.	90.9	1.305						118.6			1.27	20.59		
27	DB TK. 8.1	FR. 1-22	W.B.	74.7	1.025			76.6						1.51	50.4		
28	WING TK. 8.2	SB FR. 11-22	W.B.	49.4	1.025			50.6						4.57	9.50		
29	WING TK. 8.2	PS FR. 11-22	W.B.	19.0	1.025			19.5						3.76	8.05		
30	WING TK. 9.1	SB FR. 3-11	F.W.	21.8	1.00		21.8							3.55	4.25		
31	WING TK. 9.1	PS FR. 3-11	F.W.	21.8	1.00		21.8							3.55	4.25		
32	ROLL RED. TK. 9.2	FR. 8-11	W.B./BRINE	97.0	1.025/2.00			99.4				194.0		5.88	6.30		
33	ROLL RED. TK. 9.3	FR. 3-8	W.B.	142.5	1.025			146.1						5.91	33.31		
34	STERN TK. 10.1	SB FR. -10-3	F.W.	85.7	1.00		85.7							4.92	-1.63		
35	STERN TK. 10.1	PS FR. -10-3	F.W.	85.7	1.00		85.7							4.92	-1.63		
36	STERN WING TK. 10.2	SB FR. -10-3	F.W.	45.2	1.00		45.2							6.00	-1.37		
37	STERN WING TK. 10.2	PS FR. -10-3	F.W.	45.2	1.00		45.2							6.00	-1.37		
38	CHAIN LOCKER 1	SB FR. 71-76	W.B.	61.2	1.025			62.7			62.7			3.29	43.94		
39	CHAIN LOCKER 1	PS FR. 71-76	W.B.	61.2	1.025			62.7			62.7			3.29	43.94		
40	CHAIN LOCKER 2	SB FR. 66-71	W.B.	72.1	1.025			73.9			73.9			3.70	41.10		
41	CHAIN LOCKER 2	PS FR. 66-71	W.B.	72.1	1.025			73.9			73.9			3.70	41.10		
42	F.D. BAY TK.	FR. 41-49	F.D.	20.5	0.87	17.8								5.26	26.97		
43	F.D. SETTLING TK.	FR. 33-41	F.D.	22.1	0.87	19.2								4.96	22.17		
44	AVAILABLE F.D. SETTL. TK.	FR. 26-33	F.D.	20.1	0.87	17.5								5.06	17.72		
45	SERVO OIL STORAGE TK.	FR. 45-46	HYDR. OIL	2.0	0.83									4.84	27.30		
46	GEAR OIL STORAGE TK.	FR. 46-47	LUB. OIL	2.0	0.83									4.86	27.90		
47	L.D. STORAGE TK. ME.	FR. 34-37	LUB. OIL	6.8	0.83									6.83	21.30		
48	L.D. STORAGE TK. SPARE	FR. 47-48	LUB. OIL	2.0	0.83									4.88	28.50		
49	HYDR. OIL STORAGE TK. 1	FR. 37-39	HYDR. OIL	4.4	0.83									5.78	22.80		
50	HYDR. OIL STORAGE TK. 2	FR. 39-41	HYDR. OIL	4.3	0.83									5.80	24.00		
51	L.D. STORES TK. AUX. ENG.	FR. 44-45	LUB. OIL	2.0	0.83									4.78	26.70		
52	WASTE F.D. TK.	SB FR. 27-28	F.D.	0.9										1.70	16.50		
53	WASTE F.D. TK.	PS FR. 27-28	F.D.	0.9										1.70	16.50		
54	DIRTY OIL TK.	FR. 22-25												3.65	28.80		
55	SLUDGE TANK	FR. 22-24		3.2													
56	HYDR. OIL TK. PROPELL.	SB FR. 32-33	HYDR. OIL	0.8										1.26	19.80		
57	HYDR. OIL TK. PROPELL.	PS FR. 32-33	HYDR. OIL	0.8										1.26	19.80		
58	HYDR. OIL TK. SPARE	FR. 41-44	HYDR. OIL	6.2	0.83									6.93	25.50		
59	LUB. OIL SYST. TK. ME. 1	FR. 32-37	LUB. OIL	2.7	0.83									1.28	20.68		
60	LUB. OIL SYST. TK. ME. 2	FR. 32-37	LUB. OIL	2.7	0.83									1.28	20.68		
61	LUB. OIL SYST. TK. ME. 3	FR. 32-37	LUB. OIL	2.7	0.83									1.28	20.68		
62	LUB. OIL SYST. TK. ME. 4	FR. 32-37	LUB. OIL	2.7	0.83									1.28	20.68		
63	CEMENT TK.	SB CL FR. 86		94.4	3.00			283.2						6.01	51.60		
64	CEMENT TK.	PS CL FR. 86		94.4	3.00			283.2						6.01	51.60		
65	LIQUID MUD	SB FR. 11-24		150.0	2.40						360.0			5.85	10.50		
66	FOAM TK. 2	FR. 13-21		20.0	1.08									6.02	9.63		
67	LIQUID MUD	PS FR. 11-24		150.0	2.40						360.0			5.85	10.50		
TOTAL WEIGHTS, TONNES:							1032.9	566.4	858.9	566.4	720.0	833.8	194.0				
TOTAL VOLUME, M ³ :							1187.3	566.4	838.0	188.8	981.0	300.0	617.3	97.0			

VS 469.2 AHTS
 PRINCIPAL PARTICULARS:
 LENGTH OVER ALL: 75.00 m
 LENGTH BETW. PERP.: 64.20 m
 BREADTH: 16.00 m
 DEPTH 1 DECK: 7.40 m
 DEPTH 2 DECK: 4.60/5.00 m

DNVC +1A1 - Tug and Supply Vessel - SF
 Fire Fighter I - EO - Oil Rec.

Approved Class/Date	Approved Owner/Date	Approved Authorities/Date	Checked V&S/Date
AHTS M/S VIKING QUEEN			
TANK PLAN			
SCALE: 1:150	DATE: 03.01.97	DRAWN: O.H.	
PLOT DATE		V&S DRAWING NO.	REV. A
		563	171-LK08
<small>P.O. BOX 124 N-5410 FTJARK, NORWAY TEL: +47 53 49 73 95 FAX: +47 53 49 75 77 TELEX: 42407 BOAT N</small>		1/1	