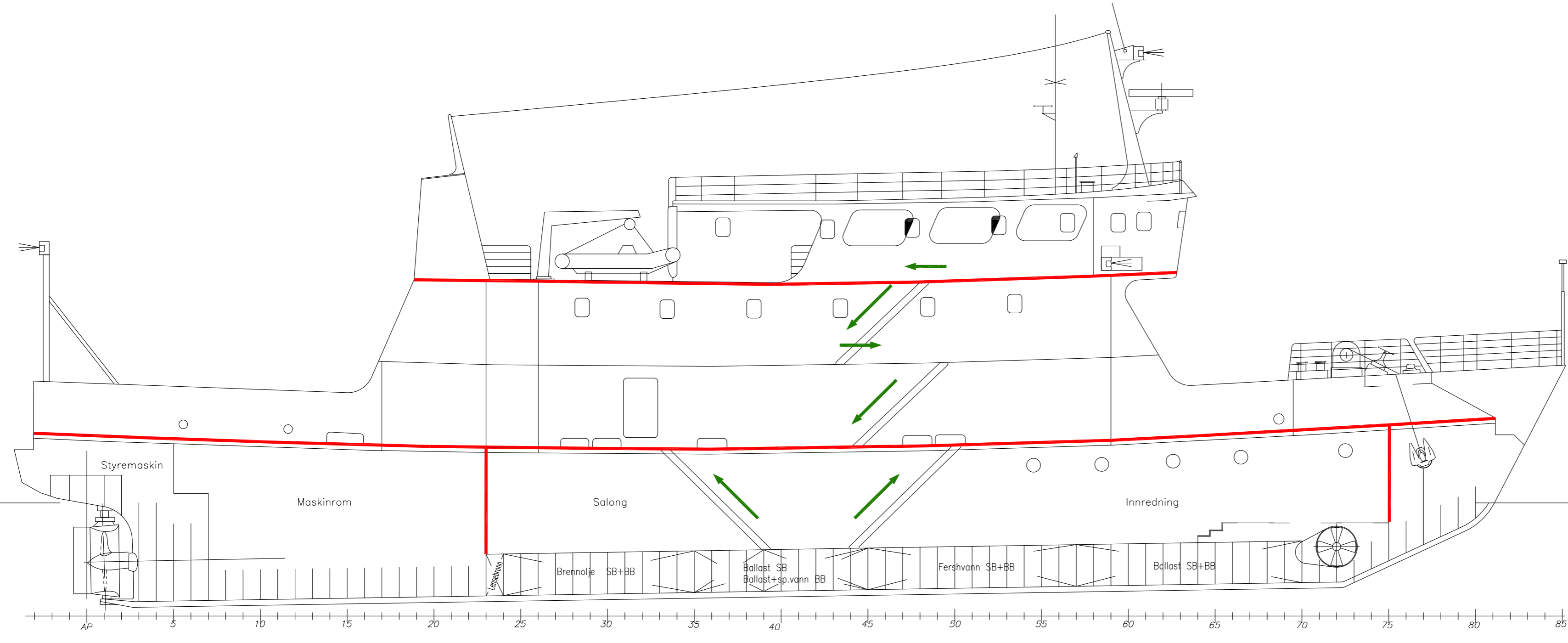
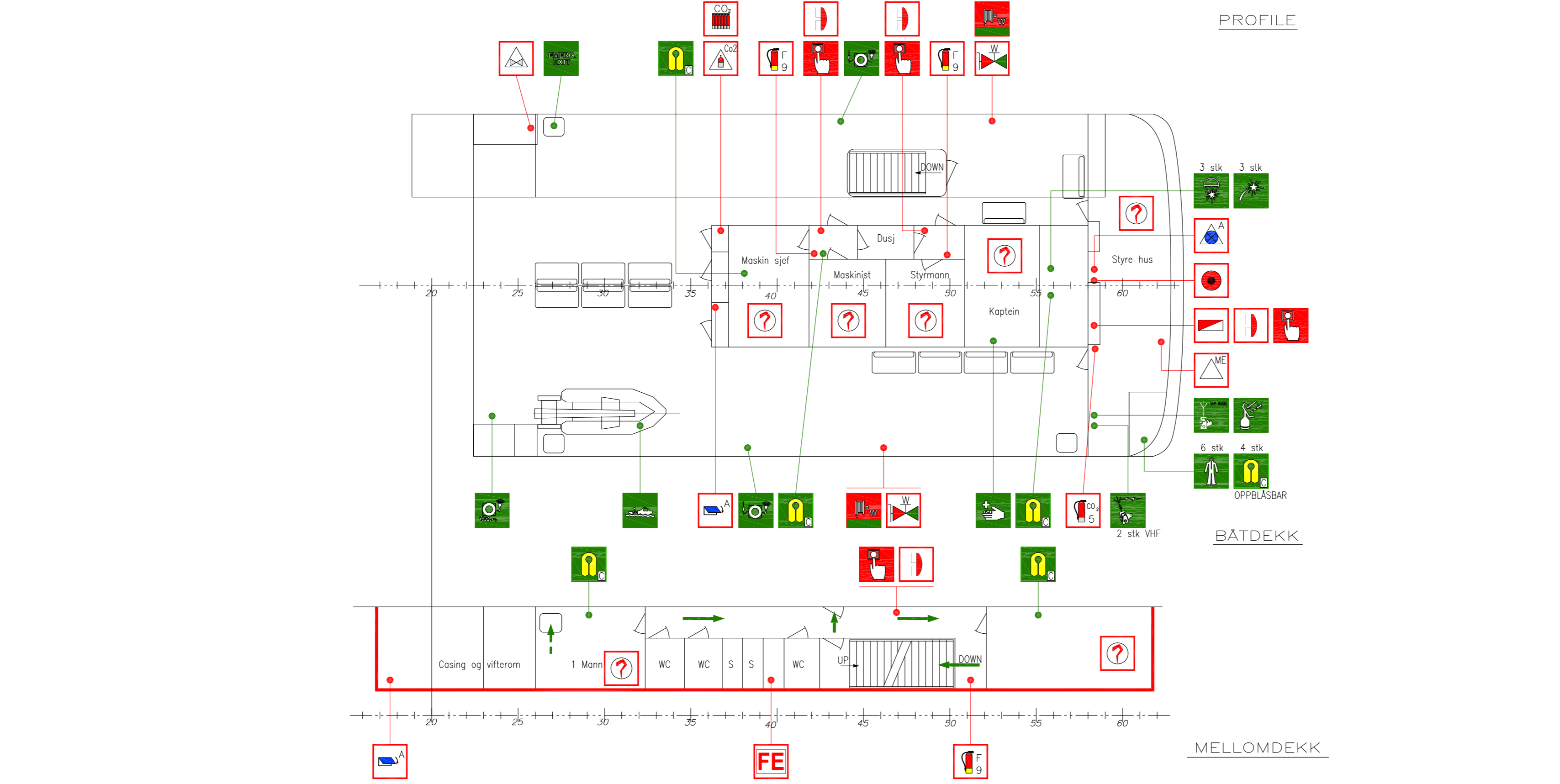


# MF "SALANGEN" - L G X C - IMO No.:7222310

## BRANN- OG SIKKERHETSPLAN / FIRE CONTROL AND SAFETY PLAN



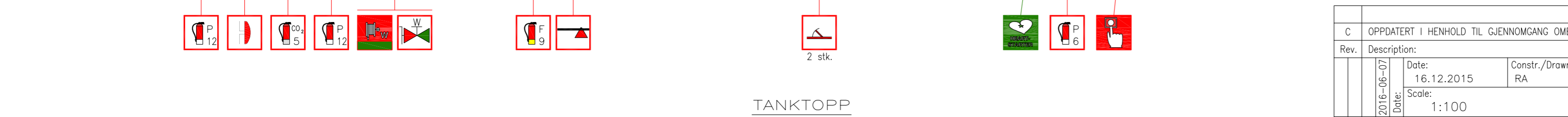
PROFILE



BÅTDEKK



MELLOMDEKK



HOVEDDEKK



TANKTOPP

LIFE-SAVING EQUIPMENT / LIVREDNINGSUTSTYR	
SYMBOL	QTY ANT. / DESCRIPTION BESKRIVELSE
	2 MUSTER STASJON
	2 LIFE RAFT 100 PERS
	2 REDNINGSFLATE 100 PERS
	2 EVAKUERINGSBANE
	1 ARBEIDSBÅT
	1 LIVBØYE MED LINE
	2 LIVBØYE MED LYS OG LINE
	2 LIFEBOUY WITH LIGHT AND SMOKE RELEASED FROM WHEELHOUSE
	6 IMMERSION SUIT
	6 REDNINGSDRAKTER
	10 LIFEJACKET FOR CREW, 4 INFLATABLE YELLOW COLORED MARKED CREW
	109 REDNINGSVESTER FOR MANNSKAP, 4 OPPBLÅSBARE GUL MERKET MANNSKAP
	23 CHILD'S LIFE JACKET
	3 FALLSKJERMFLY
	3 HÅNDBLUSS
	3 PORTABLE RADIO 2 x VHF, 1 x UHF
	1 VHF AIR
	1 VHF AIR FLY RADIO
	1 RADAR TRANSPONDER - SART
	1 RADAR TRANSPONDER
	1 FIRST AID KIT
	1 STRETCHER
	1 HEART STARTER MACHINE
	4 EMERGENCY EXIT
	- HOVEDRØMNINGSGVEI
	- ALTERNATIV RØMNINGSGVEI

FIRE-FIGHTING EQUIPMENT / BRANNVERNUTSTYR	
SYMBOL	QTY ANT. / DESCRIPTION BESKRIVELSE
	1 SAFETY FIRE CONTROL PLAN
	1 BRANNPLAN
	1 CONTROL PANEL FOR FIRE DETECTION AND ALARM SYSTEM
	1 TRYKKNAPP FOR GENERAL ALARM
	7 MANUELL BRANNMELDER
	7 BELL FIRE ALARM
	1 HORN CO2 ALARM
	18 RØYKDETEKTOR
	4 VARMEDETEKTOR
	7 FIRE EXTINGUISHER FOR POWDER, 12 KG
	1 BRANNSLOKKNINGSAPPARAT FOR PULVER, 6 KG
	2 BRANNSLOKKNINGSAPPARAT FOR CO2
	6 BRANNSLOKKNINGSAPPARAT FOR SKUM
	7 BRANNHYDRANT
	7 BRANNSLANGE OG DYSE FOR VANN
	2 BRANNØKS
	1 BRANNSLOKKNINGSBATTERI FOR CO2
	1 SKAP MED BRANNMANNSUTSTYR
	3 LUKKEANORDNING FOR VENTILASJON I INNREDNING
	1 CLOSING DEVICE FOR VENTILATION INLET OR OUTLET IN ACCOMMODATION AND SERVICE SPACES
	1 CLOSING DEVICE FOR VENTILATION INLET OR OUTLET IN MACHINERY SPACES
	2 VENTILATION REMOTE CONTROL OR SHUT-OFF FOR ACCOMMODATION AND SERVICE SPACES
	1 VENTILATION REMOTE CONTROL OR SHUT-OFF FOR MACHINERY SPACES
	1 FJERNSTART/STOPP FOR BRANNPUMPE
	2 NØDSTOPP HOVEDMOTOR
	1 FJERNSTYRING FOR BRENNOLJEVENTILER
	1 REMOTE RELEASE STATION (CO2)
	1 FJERNSTYRT UTSLØSERSTASJON FOR CO2
	1 BRANNPUMPE 35 m3/hr
	1 EMERGENCY FIRE AND BILGE PUMP 25 m3/hr
	1 BILGE PUMP 25 m3/hr
	1 LENSEPUMPE 25 m3/hr
	4 A CLASS FIRE DOOR
	4 BRANNDØR KLASSE A
	1 CLASS A DIVISION
	1 BRANNSKILLE KLASSE A

C	OPPDATERT I HENHOLD TIL GJENNOMGANG OMBORD, NMA GODKJENT 07.06.2016	2016-06-17 / RB
Rev.	Description:	Date/Sign:
2016-06-07	Date: 16.12.2015	Constr./Drawn: RA
2016-06-07	Date:	Constr.: IC
2016-06-07	Date:	Scale: 1:100
2016-06-07	Date:	Approved: RB
NMA rev C	MF "SALANGEN" - L G X C	BRANN- OG SIKKERHETSPLAN /
Approved:	FIRE CONTROL AND SAFETY PLAN	3524-500-001_C
Reference:		Sheet no: 1 of 1
		Replacement for:

